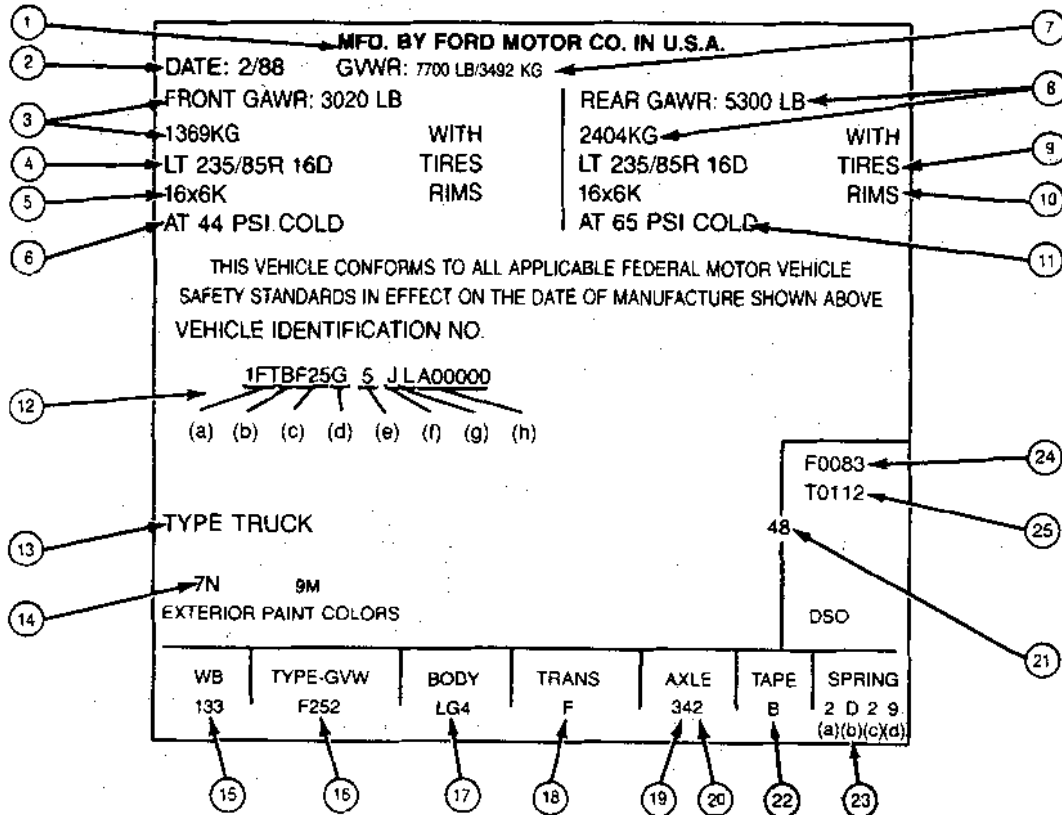


LIGHT/MEDIUM/HEAVY (Continued)

Typical Light Truck Safety Compliance Certification Label



- ① Name and Location of Manufacturer
- ② Date of Manufacture
- ③ Front Gross Axle Weight Ratings in Pounds (LB) and Kilograms (KG)
- ④ Front Tire Size
- ⑤ Rim Size
- ⑥ Front Tire Cold PSI
- ⑦ Gross Vehicle Weight Rating in Pounds (LB) and Kilograms (KG)
- ⑧ Rear Gross Axle Weight Rating in Pounds (LB) and Kilograms (KG)
- ⑨ Rear Tire Size
- ⑩ Rim Size
- ⑪ Rear Tire Cold PSI

- ⑫ Vehicle Identification Number
 - (a) World Manufacturer Identifier
 - (b) Brake System and Gross Vehicle Weight Rating (GVWR) Class for Ford completed Trucks and MPVs. For Buses and Incomplete Vehicles, the fourth digit determines the brake system (only)
 - (c) Model or Line, Series, Chassis, Cab or Body Type
 - (d) Engine Type
 - (e) Check Digit
 - (f) Model Year (Ford-Complete Trucks and MPVs)
 - (g) Assembly Plant Code
 - (h) Sequence Number
- ⑬ Type Vehicle
- ⑭ Exterior Paint Codes (two sets of figures designates a two-tone)
- ⑮ Wheelbase in Inches

- ⑯ Model Code and GVW
- ⑰ Interior Trim, Seal and Body/Cab Type
- ⑱ Transmission Code
- ⑲ Rear Axle Code
- ⑳ Front Axle Code if so Equipped
- ㉑ District/Special Order Codes
- ㉒ External Body Tape Stripe Code
- ㉓ Suspension Identification Codes
 - (a) Aux./Opt. Usage Code (Front)
 - (b) Front Spring Code
 - (c) Aux./Opt. Usage Code (Rear)
 - (d) Rear Spring Code
- ㉔ Front Axle Accessory Reserve Capacity in Pounds
- ㉕ Total Accessory Reserve Capacity in Pounds

LIGHT/MEDIUM/HEAVY (Continued)

Vehicle Identification Number (VIN)

A seventeen digit combination of numbers and letters form the Vehicle Identification Number (VIN). The VIN is located in the center area of the Vehicle Rating Decal.

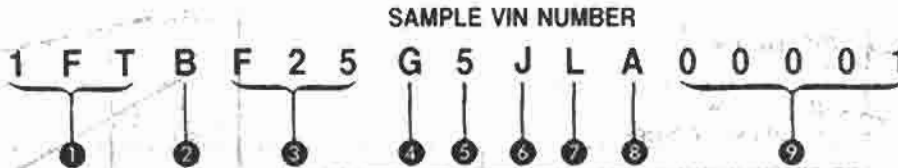
By looking at the seventeen digit VIN number a variety of information about the vehicle can be determined. The first three digits identify the manufacturer and the vehicle make and type. The fourth digit determines the type of brake system (air or hydraulic) and the Gross Vehicle Weight Rating (GVWR) Class for Trucks (complete vehicles); Brake System (only) for Incomplete Vehicles. Digits five, six and seven identify the model or line, series, chassis and cab type. The eighth digit points out the particular engine and type (gas or diesel) found in the vehicle. Digit nine is the VIN check digit. The

tenth digit identifies the model year of a Ford completed vehicle, or the model year of the incomplete vehicle, if sold by Ford as an incomplete vehicle. The eleventh digit determines the assembly plant. Digits twelve through seventeen make up the sequential serial and warranty number. Digit twelve uses the letter "A" until the production or sequence of 99,999 units (digits thirteen through seventeen) is reached. Letter "A" then becomes "B" for the next production sequence of vehicles.

Refer to Illustration to help in further explanation of the Vehicle Identification Number (VIN).

Refer to the code definition portion of this Section for specific definitions of the numbers and letters of the Vehicle Identification Number (VIN).

Typical Vehicle Identification Numbers (VIN)



- ① Position 1, 2 and 3 — Manufacturer, Make and Type (World Manufacturer Identifier)
- ② Position 4 — Brakes System/GVWR Class for Ford-completed Trucks and MPV's. For Buses and Incomplete Vehicles, Brake System (only).
- ③ Position 5, 6 and 7 — Model or Line, Series, Chassis, Cab or Body Type
- ④ Position 8 — Engine Type
- ⑤ Position 9 — Check Digit

- ⑥ Position 10 — Model Year (Ford-completed vehicles)
- ⑦ Position 11 — Assembly Plant
- ⑧ Position 12 — Constant "A" until sequence number of 99,999 is reached, then changes to a constant "B" and so on
- ⑨ Position 13 through 17 — Sequence number — begins at 00001

CY2376-2G

Medium/Heavy Truck Chassis-Cab Certification Label

THIS CHASSIS-CAB CONFORMS TO FEDERAL MOTOR VEHICLE SAFETY STANDARD NOS. 101, 102, 103, 106, 107, 111, 113, 115, 116, 124, 205, 206, 207, 208, 209, 210, AND 302. THIS VEHICLE WILL CONFORM TO STANDARD NOS. 108, 120 AND 105 OR 121 (AS APPLICABLE) IF IT IS COMPLETED IN ACCORDANCE WITH THE INSTRUCTIONS CONTAINED IN THE INCOMPLETE VEHICLE DOCUMENT FURNISHED PURSUANT TO 49 CFR PART 568. CONFORMITY TO THE OTHER SAFETY STANDARDS APPLICABLE TO THIS VEHICLE WHEN COMPLETED IS NOT SUBSTANTIALLY AFFECTED BY THE DESIGN OF THE CHASSIS-CAB. CHASSIS-CAB MANUFACTURED BY FORD MOTOR COMPANY IN U.S.A.

A10416-1A

LIGHT/MEDIUM/HEAVY (Continued)**Build Date Stamp Locations**

The vehicle build date stamp is located as follows: On Bronco, Light Trucks (F-150—F-250—F-350), the vehicle build date is stamped on the front surface of the radiator support on the passengers side of the vehicle. On Econoline vehicles (E-150—E-250—E-350), the build date is stamped on top of the radiator support. Following is a sample of the four digit number that indicates the month and day of build:

Actual Date of Build**Date Stamp on Vehicle**

January 24 0124

October 21 1021

Yellow ink is used for the date stamp. When the marking surface is painted the body color, the date stamp will be marked in red ink. Units from the Ontario Truck Plant (Code C) will be marked with silver ink.

Vehicle Data

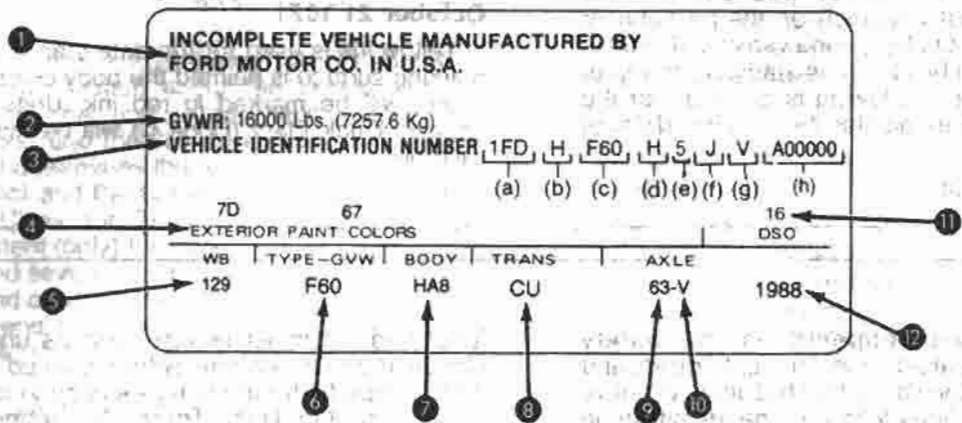
The Vehicle Data appears on the Safety Compliance Certification Label for Light Trucks, and on the Vehicle Rating Decal for Medium and Heavy Trucks on the two lines following the identification number. The code set (two numbers or a number and letter) above COLOR identify the exterior paint color (two sets of codes designate a two-tone). The three digits under W.B. designate the wheelbase in inches. The letter and three digits under TYPE/G.V.W. designate the truck model within a series and the gross vehicle weight rating. The letters and/or numeral under BODY designate the interior trim, seat and body type. The transmission installed in the vehicle is identified under TRANS by an alphabetical code (if two symbols appear, the first identifies the auxiliary transmission, if so equipped, and the second symbol identifies the main transmission). A

letter and a number or two numbers under AXLE identify the rear axle ratio (when required, a letter is also stamped after the rear axle code to identify the front axle). On Light Trucks the letters and/or numerals under TAPE designate the external bodyside tape stripe. The spring usage Codes for the Vehicle is identified under SPRING.

A two-digit number is stamped above D.S.O. to identify the district which ordered the vehicle. If the vehicle is built to special order (Domestic Special Order, Foreign Special Order, Limited Production Option, or other special order), the complete order number will also appear above D.S.O. The vehicle model year appears in the lower right corner area of the decal under D.S.O. for Medium and Heavy Trucks. The following charts list the various vehicle data codes.

LIGHT/MEDIUM/HEAVY (Continued)

Typical Medium/Heavy Truck Vehicle Rating Decal



- 1 Name and Location of Manufacturer
- 2 Gross Vehicle Weight Rating in Pounds (LB) and Kilograms (KG)
- 3 Vehicle Identification Number
 - (a) World Manufacturer Identifier
 - (b) Brake System and Gross Vehicle Weight Rating (GVWR) Class for Trucks (complete vehicles); Brake System (only) for Incomplete Vehicles
 - (c) Model or Line, Series, Chassis and Cab Type
 - (d) Engine Type
 - (e) Check Digit
 - (f) Model Year (Ford — completed vehicles)
 - (g) Assembly Plant Code
 - (h) Sequential Serial Number

- 4 Exterior Paint Codes
(Two sets of figures designates a two-tone)
- 5 Wheelbase in Inches
- 6 Model Code and GVW
- 7 Interior Trim, Seat and Body/Cab Type
- 8 Transmission Code
- 9 Rear Axle Code
- 10 Front Axle Code
- 11 District/Special Order Codes
- 12 Vehicle Model Year

LIGHT/MEDIUM/HEAVY (Continued)

Vehicle Identification Number (VIN) Codes

VEHICLE IDENTIFICATION NUMBER (VIN) CODES

WORLD MANUFACTURER IDENTIFIER
(VIN POSITIONS 1, 2 AND 3)

Light Truck

1FT

B F25G5JLA00001

Medium/Heavy Truck

1FD

PF83H5JVA00001

VIN Code	Manufacturer	Make	Type
1FM	Ford Motor Company, USA	Ford	Multi-Purpose Passenger Vehicle (MPV)
1FT	Ford Motor Company, USA	Ford	Truck (Complete Vehicle)
1FD	Ford Motor Company, USA	Ford	Incomplete Vehicle (IV)
1FC	Ford Motor Company, USA	Ford	Basic (Stripped) Chassis
1FB	Ford Motor Company, USA	Ford	Bus
1FF	Ford Motor Company, USA	Ford	Motor Vehicle Equipment without Engine/ Powertrain (Glider)
2FM	Ford Motor Company of Canada, Ltd.	Ford	MPV
2FT	Ford Motor Company of Canada, Ltd.	Ford	Truck (Complete Vehicle)
2FD	Ford Motor Company of Canada, Ltd.	Ford	Incomplete Vehicle
2FC	Ford Motor Company of Canada, Ltd.	Ford	Basic (Stripped) Chassis
2FB	Ford Motor Company of Canada, Ltd.	Ford	Bus
2FF	Ford Motor Company of Canada, Ltd.	Ford	Motor Vehicle Equipment without Engine/ Powertrain (Glider)

CY2411-2G

LIGHT/MEDIUM/HEAVY (Continued)

**BRAKE SYSTEM AND GVWR CLASS FOR TRUCKS AND MPV'S —
BRAKE SYSTEM (ONLY) FOR BUSES AND INCOMPLETE VEHICLES
(VIN POSITION 4)**

Light Truck

Medium/Heavy Truck

IFT **B** F25G5JLA00001 IFD **P** F83H5JVA00001

Brake System	GVWR Class	GVWR Range	VIN Code
Hydraulic	Class A	Not greater than 3,000 pounds	A
Hydraulic	Class B	3,001-4,000 pounds	B
Hydraulic	Class C	4,001-5,000 pounds	C
Hydraulic	Class D	5,001-6,000 pounds	D
Hydraulic	Class E	6,001-7,000 pounds	E
Hydraulic	Class F	7,001-8,000 pounds	F
Hydraulic	Class G	8,001-8,500 pounds	G
Hydraulic	Class G	8,501-9,000 pounds	H
Hydraulic	Class H	9,001-10,000 pounds	J
Hydraulic	Class 3	10,001-14,000 pounds	K
Hydraulic	Class 4	14,001-16,000 pounds	L
Hydraulic	Class 5	16,001-19,500 pounds	M
Hydraulic	Class 6	19,501-26,000 pounds	N
Hydraulic	Class 7	26,001-33,000 pounds	P
Hydraulic	Class 8	33,001-55,000 pounds	R
Hydraulic	Class 8	55,001 pounds and over	S
Air	Class 3	10,001-14,000 pounds	T
Air	Class 4	14,001-16,000 pounds	U
Air	Class 5	16,001-19,500 pounds	V
Air	Class 6	19,501-26,000 pounds	W
Air	Class 7	26,001-33,000 pounds	X
Air	Class 8	33,001-55,000 pounds	Y
Air	Class 8	55,001 pounds and over	Z

CY2867-2E

LIGHT/MEDIUM/HEAVY (Continued)

MODEL OR LINE, SERIES, CHASSIS, CAB OR BODY TYPE — LIGHT TRUCK
(VIN POSITIONS 5, 6, AND 7)

1FTB **F25** G5JLA00001

VIN Code		Line	Series	Chassis Type	Cab or Body Type	Vehicle Type ①
Club Wagon	Super Wagon					
E11	—	Club Wagon XL	E150	4x2	Club Wagon	MPV
E21	—	Club Wagon XL	E250	4x2	Club Wagon	MPV or Bus ②
—	S31	Club Wagon XL	E350	4x2	Super Wagon	MPV or Bus ②

Memo: One of the following optional exterior nameplates (indicating different trim levels) may also be affixed to the vehicle in addition to the Club Wagon XL nameplate:
 • XLT • No Nameplate (Trim credit option deletes XL trim components) ② Excludes School Bus

Regular Van	Super Van	Line	Series	Chassis Type	Cab or Body Type	Vehicle Type ①
E14	S14	Econoline	E150	4x2	Cargo Van — Regular Van/Super Van	Truck or IV
E24	S24	Econoline	E250	4x2	Cargo Van — Regular Van/Super Van	Truck or IV
E34	S34	Econoline	E350	4x2	Cargo Van — Regular Van/Super Van	Truck or IV
Other	—					
E37	—	Econoline	E350	4x2	Commercial Cutaway	IV
E30	—	Econoline	E350	4x2	RV Cutaway	IV
E39	—	Econoline	E350	4x2	Commercial Basic (Stripped) Chassis	IV
E33	—	Econoline	E350	4x2	RV Basic (Stripped) Chassis	IV

① "MPV" means Multi-Purpose Vehicle. "IV" means Incomplete Vehicle. "Truck" means Complete Vehicle.
Memo: For all Econoline except Basic (Stripped) Chassis, the optional exterior nameplate "XL" (indicating trim level) may also be affixed to the vehicle in addition to the Econoline nameplate.
Note: All 1988 model Commercial and RV Basic (Stripped) Chassis incomplete vehicles are designated by a "1FC" or "2FC" World Manufacturer Identifier (WMI) code. The RV Basic (Stripped) Chassis is available only on a Special Order Basis.

VIN Code	Line	Series	Chassis Type	Cab or Body Type	Vehicle Type ①
U15	Bronco	U150	4x4	Bronco	MPV

Memo: One of the following optional exterior nameplates (indicating higher trim levels) may also be affixed to the vehicle in addition to the Bronco nameplate:
 • XLT • Eddie Bauer

Regular Cab	Super Cab or Crew Cab	Line	Series	Chassis Type	Cab or Body Type	Vehicle Type ①
F14	X14	F-Series	F150	4x4	Pickup — Regular Cab/Super Cab	Truck
F15	X15	F-Series	F150	4x2	Pickup — Regular Cab/Super Cab	Truck
F25	X25	F-Series	F250	4x2	Pickup — Regular Cab/Super Cab	Truck
F26	X26	F-Series	F250	4x4	Pickup — Regular Cab/Super Cab	Truck
F35	W35	F-Series	F350	4x2	Pickup — Regular Cab/Crew Cab	Truck
F37	—	F-Series	F350	4x2	Regular Cab (Chassis Cab)	IV
F36	W36	F-Series	F350	4x4	Pickup — Regular Cab/Crew Cab	Truck
F38	—	F-Series	F350	4x4	Regular Cab (Chassis Cab)	IV
F47	—	F-Series	F-Super Duty	4x2	Regular Cab (Chassis Cab)	IV

① "MPV" means Multi-Purpose Passenger Vehicle. "IV" means Incomplete Vehicle.
Memo: One of the following optional exterior nameplates (indicating higher trim levels) may also be affixed to the vehicle in addition to the F-Series nameplates:
 • XL • XLT Lariat • Explorer (excluding Crew Cab and Chassis Cab)
Note: Special Order (DSO) units will be coded with the appropriate series VIN codes listed above.

LIGHT/MEDIUM/HEAVY (Continued)

MODEL OR LINE, SERIES, CHASSIS, CAB TYPE
(VIN POSITIONS 5, 6 AND 7)

1FDP F83 H5HVA00001

VIN Code	Description
B60	B-600, Chassis Cowl, Gas Engine
B70	B-700, Chassis Cowl, Gas Engine
D80	C-8000, Chassis Cab, Diesel Engine
F60	F-600, Chassis Cab, Gas Engine
F61	F-600, Chassis Cowl, Gas Engine
F70	F-700, Chassis Cab, Gas Engine
F71	F-700, Chassis Cowl, Gas Engine
F77	F-700 (4x4), Chassis Cab, Gas Engine
F82	F-800, Chassis Cab, Gas Engine
F83	F-800, Chassis Cowl, Gas Engine
G80	FT-800, Chassis Cab, Gas Engine
H80	CT-8000, Chassis Cab, Diesel Engine
J65	B-600 Chassis Cowl Diesel Engine
J75	B-700 Chassis Cowl, Ford Diesel Engine
K84	F-800, Chassis Cab, Ford Diesel Engine
K85	F-800, Chassis Cowl, Ford Diesel Engine
L90	FT-900, Chassis Cab, Ford Diesel Engine

CY2398-2G

ENGINE TYPE, DISPLACEMENT, CYLINDERS,
FUEL TYPE, AND MANUFACTURER
(VIN POSITION 8)

Light Truck

Medium/Heavy Truck

1FTBF25 G 5JLA00001

1FDPF83 **H** 5JVA00001

GASOLINE
ENGINES

VIN Code	Displacement		Cylinders	Fuel	Manufacturer	
	Liter	CID				
LT	Y	4.9	300	16	Gas	Ford
	H	5.8	351	V8	Gas	Ford
	N	5.0	302	V8	Gas	Ford
	G	7.5	460	V8	Gas	Ford
MH	H	6.1	370	V8	Gas	Ford
	7	6.1	370	V8	LP Gas	Ford
	K	7.0	429	V8	Gas	Ford
	8	7.0	429	V8	LP Gas	Ford

DIESEL
ENGINES

VIN Code	Displacement		Cylinders	Basic Model No.	Manufacturer
	Liter	CID			
P	6.6	401	16	6.6L	Ford
M	7.3	445	V8	—	Navistar
A	7.8	473	16	7.8L	Ford
U	10.4	636	16	3208	Caterpillar

Delete Engine
0 (Zero) DSO Glider. Delete Engine on motor vehicle equipment only

CY2415-2G

LIGHT/MEDIUM/HEAVY (Continued)

CHECK DIGIT FOR ALL VEHICLES
(VIN POSITION 9)

1FTBF25G **5** JLA00001

Light Truck

1FDPF83H **5** JVA00001

Medium/Heavy Truck

CY2589-2F

VEHICLE MODEL YEAR
FOR FORD-COMPLETED VEHICLES
(VIN POSITION 10)

Light Truck

Medium/Heavy Truck

1FTBF25G5 **J** LA00001

1FDPF83H5 **J** VA00001

VIN Code	Year
J	1988
K	1989
L	1990
M	1991
N	1992

CY2590-2F

ASSEMBLY
PLANT
(VIN POSITION 11)

Light Truck

Medium/Heavy Truck

1FTBF25G5J **L** A00001

1FDPF83H5J **V** A00001

VIN Code	Vehicle Assembly Plant Name: Location
C	Ontario Truck: Oakville, Ontario
H	Lorain: Lorain, Ohio
K	Kansas City: Claycomo, Missouri
L	Michigan Truck: Wayne, Michigan
N	Norfolk: Norfolk, Virginia
P	Twin Cities: St. Paul, Minnesota
U	Louisville: Louisville, Kentucky
V	Kentucky Truck: Jefferson County, Kentucky

CY2591-2F

PRODUCTION SEQUENCE NUMBER
(VIN POSITIONS 12 THROUGH 17)

Light Truck

Medium/Heavy Truck

1FTBF25G5JL **A00001**

1FDPF83H5JV **A00001**

SEQUENCE NUMBER
A 00001 — A 99,999
B 00001 — B 99,999
and so on.

SEQUENCE NUMBER
A 00001 — A 99,999
B 00001 — B 99,999
and so on.

CY2592-2F

LIGHT/MEDIUM/HEAVY (Continued)

EXTERIOR PAINT COLOR CODES
BRONCO, F-150 — F-250 — F-350 — F-SUPER DUTY

MFD. BY FORD MOTOR CO. IN U.S.A.

DATE: _____ GYWR: _____
FRONT GAWR: _____ REAR GAWR: _____

WITH TIRES RIMS WITH TIRES RIMS

AT PSI COLD AT PSI COLD

THIS VEHICLE CONFORMS TO ALL APPLICABLE FEDERAL MOTOR VEHICLE SAFETY STANDARDS IN EFFECT ON THE DATE OF MANUFACTURE SHOWN ABOVE

VEHICLE IDENTIFICATION NO. _____

TYPE — TRUCK

7N	9M
----	----

EXTERIOR PAINT COLORS

WB	TYPE	GVW	BODY	TRANS	AXLE	TAPE	SPRING	DSO
133	F252	LG4	F	342	B	2D29		

BRONCO EXTERIOR PAINT COLOR CODES

Code	Color
1C	Black
1D	Smoke Metallic
1G	Light Smoke Metallic
2D	Medium Scarlet
2H	Medium Cabernet
7H	Bright Regatta Blue Metallic
7N	Dark Shadow Blue Metallic
9M	White
9N	Desert Tan Metallic
9T	Light Chestnut
42	Alpine Green Metallic
95	Dark Chestnut Metallic
99	Prime
Fiberglass Roof Colors	
A	Black
B	Blue
H	Desert Tan
W	White

NOTE — TWO SETS OF CODES INDICATE TWO-TONE PAINT

F-150 — F-350 AND F-SUPER DUTY
EXTERIOR PAINT COLOR CODES

Code	Color
1C	Black
1D	Smoke Metallic
1G	Light Smoke Metallic
2D	Medium Scarlet
2H	Medium Cabernet
7H	Bright Regatta Blue Metallic
7N	Dark Shadow Blue Metallic
9M	White
9N	Desert Tan Metallic
9T	Light Chestnut
42	Alpine Green Metallic
95	Dark Chestnut Metallic
99	Prime

CLEAR COAT (CC) COLOR CODES

Code	Color
3E	Medium Regatta Blue Metallic
4U	Alpine Green Metallic
7K	Dark Shadow Blue Metallic
9Z	Silver Metallic
49	Graphite Metallic
93	Chestnut Metallic
97	Dark Chestnut Metallic

LIGHT/MEDIUM/HEAVY (Continued)

EXTERIOR PAINT COLOR CODES
E-150 — E-250 — E-350

MFD. BY FORD MOTOR CO. IN U.S.A.

DATE: _____ GVWR: LB/ KG
FRONT GAWR: LB REAR GAWR: LB

KG WITH KG WITH
TIRES TIRES
RIMS RIMS

AT PSI COLD AT PSI COLD

THIS VEHICLE CONFORMS TO ALL APPLICABLE FEDERAL MOTOR
VEHICLE SAFETY STANDARDS IN EFFECT ON THE DATE OF
MANUFACTURE SHOWN ABOVE

VEHICLE IDENTIFICATION NO. _____

TYPE TRUCK
1D 7A

EXTERIOR PAINT COLORS DSO

WB	TYPE	GVW	BODY	TRANS	AXLE	TAPE	SPRING
138	E112	EY	T	16	B	2C2D	

E-150 — E-350

Code	Color
1D	Smoke Metallic
1G	Light Smoke Metallic
3R	Medium Shadow Blue Metallic
7A	Spinnaker Blue
7N	Dark Shadow Blue Metallic
9M	White
9N	Desert Tan Metallic
9T	Light Chestnut
27	Medium Red
95	Dark Chestnut Metallic
99	Prime

NOTE: Two sets of codes indicate two-tone paint.

LIGHT/MEDIUM/HEAVY (Continued)

**BRAKE SYSTEM AND GVWR CLASS FOR TRUCKS —
BRAKE SYSTEM (ONLY) FOR BUSES AND
INCOMPLETE VEHICLES
(VIN POSITION 4)**

1 F D **P** F 8 3 H 5 J V A 0 0 0 0 1

Brake System	GVWR Class	GVWR Range	VIN Code
Hydraulic	Class 3	10,001-14,000 pounds	K
Hydraulic	Class 4	14,001-16,000 pounds	L
Hydraulic	Class 5	16,001-19,500 pounds	M
Hydraulic	Class 6	19,501-26,000 pounds	N
Hydraulic	Class 7	26,001-33,000 pounds	P
Hydraulic	Class 8	33,001-55,000 pounds	R
		55,001 pounds and over	S
Air	Class 3	10,001-14,000 pounds	T
Air	Class 4	14,001-16,000 pounds	U
Air	Class 5	16,001-19,500 pounds	V
Air	Class 6	19,501-26,000 pounds	W
Air	Class 7	26,001-33,000 pounds	X
Air	Class 8	33,001-55,000 pounds	Y
		55,000 pounds and over	Z

CY2657-2E

LIGHT/MEDIUM/HEAVY (Continued)

TYPE — GROSS VEHICLE WEIGHT (GVW) CODES
BRONCO, F-150 — F-250 — F-350 — F-SUPER DUTY

MFD. BY FORD MOTOR CO. IN U.S.A.

DATE: _____ GVWR: _____
FRONT GAWR: _____ REAR GAWR: _____

WITH _____ WITH _____
TIRES _____ TIRES _____
RIMS _____ RIMS _____

AT PSI COLD _____ AT PSI COLD _____

THIS VEHICLE CONFORMS TO ALL APPLICABLE FEDERAL MOTOR
VEHICLE SAFETY STANDARDS IN EFFECT ON THE DATE OF
MANUFACTURE SHOWN ABOVE

VEHICLE IDENTIFICATION NO. _____

TYPE — TRUCK
7N 9M

EXTERIOR PAINT COLORS _____ DSO _____

WB	TYPE	GVW	BODY	TRANS	AXLE	TAPE	SPRING
133	F252		LG4	F	342	B	2D29

F25 2

Series	Series Code	GVWR Code	GVWR (lb.)	Wheelbase (in.)
Bronco				
U150	U15	2	6050	105
	U15	4	6300	106
	U15	5	6450	105

Series	Series Code	GVWR Code	GVWR (lb.)	Wheelbase (in.)
F-250 (4x4)	F26	1	6800	133
	X26	8	8800	155
	F26	8	8600	133
F-350 (4x2)	F35	2	10,000	133
	F37	4	8800	133
	F37	8	10,000	137, 161
	F37	9	11,000	137, 161
	W35	2	9200	168
	W35	3	10,000	168
F-350 (4x4)	X35	1	10,000	155
	F36	1	9000	133
	F38	2	8800	133
	F38	4	11,000	137
F-Super Duty (4x2)	W36	1	9200	168
	F47	6	14,600	137, 161

F-150 — F-250 — F-350				
F-150 (4x2)	F15	3	5250	117
	F15	4	5450	133
	F15	5	6250	133
	X15	1	6050	139
	X15	2	6250	155
F-150 (4x4)	F14	1	6100	117
	F14	2	6250	133
	X14	3	6250	139
	X14	1	6250	155
F-250 (4x2) Light Duty	F25	1	6600	133
	F25	2	7700	133
F-250 (4x2) Heavy Duty	F25	7	8600	133
	X25	9	8800	155

LIGHT/MEDIUM/HEAVY (Continued)

TYPE — GROSS VEHICLE WEIGHT (GVW) CODES
E-150 — E-250 — E-350

MFD. BY FORD MOTOR CO. IN U.S.A.						
DATE:	FRONT GAWR: LB		GVWR: LB/ KG		REAR GAWR: LB	
	KG	WITH	KG	WITH	WITH	
		TIRES		TIRES	TIRES	
		RIMS		RIMS	RIMS	
AT PSI COLD			AT PSI COLD			
THIS VEHICLE CONFORMS TO ALL APPLICABLE FEDERAL MOTOR VEHICLE SAFETY STANDARDS IN EFFECT ON THE DATE OF MANUFACTURE SHOWN ABOVE						
VEHICLE IDENTIFICATION NO.						
TYPE	TRUCK					
ID	7A					
EXTERIOR PAINT COLORS						DSO
WB	TYPE	GVW	BODY	TRANS	AXLE	TAPE
138	E112		EY	T	16	B
						SPRING
						2D29

E11 2

E-150 — E-350 CLUB — CUSTOM AND CHATEAU WAGONS

Series	Series Code	GVWR Code	GVWR (lb.)
E-150 Conventional	E11	2	6,500
E-250 Conventional	E21	P	8,550
E-350 Super	S31	5	9,100

E-150 — E-350 CARGO VANS

Series	Series Code	GVWR Code	GVWR (lb.)
E-150 Conventional Cargo	E14	1	5,500
	E14	2	6,100
	E14	3	6,500
E-150 Super Cargo	S14	1	6,200
E-250 Conventional Cargo	E24	1	7,200
	E24	2	7,900
E-250 Super Cargo	S24	1	8,100
E-350 Conventional Cargo	E34	1	9,400
	E34	2	9,500
E-350 Super Cargo	S34	1	9,000

E-350 REGULAR CUTAWAY VANS

Series	Series Code	GVWR Code	GVWR (lb.)
E-350 Regular Cutaway Van	E30	2	10,500 DR
	E30	3	11,000 DR

SR: Single Rear Wheels

DR: Dual Rear Wheels

E-350 COMMERCIAL CUTAWAY VANS

Series	Series Code	GVWR Code	GVWR (lb.)
E-350 Commercial Cutaway Van	E37	1	10,000 DR
	E37	2	10,300 DR
	E37	3	10,700 DR

SR: Single Rear Wheels

DR: Dual Rear Wheels

E-350 STRIPPED CHASSIS VAN

Series	Series Code	GVWR Code	GVWR (lb.)
E-350 Stripped Chassis Van	E39	U	9,400 SR
	E39	W	10,000 DR

SR: Single Rear Wheels

DR: Dual Rear Wheels

E-350 COMMERCIAL CUTAWAY STRIPPED CHASSIS

Series	Series Code	GVWR Code	GVWR (lb.)
E-350 Commercial Cutaway Stripped Chassis	E33	3	11,500 DR

CY2779-2D

LIGHT/MEDIUM/HEAVY (Continued)

**TYPE — GROSS VEHICLE WEIGHT (GVW) CODES
MEDIUM/HEAVY TRUCK — F, B AND C-SERIES**

INCOMPLETE VEHICLE MANUFACTURED BY FORD MOTOR COMPANY CO. IN U.S.A.					
GVWR: VEHICLE IDENTIFICATION NUMBER					
7D	67				16
EXTERIOR PAINT COLORS					DSO
WB	TYPE GVW	BODY	TRANS	AXLE	
129	F60	AD7	CU	63-M	1988

F60

CODE	SERIES	GVWR LB.	
		STANDARD	MAXIMUM
B60	B600	21,000	25,500
B70	B700	24,100	28,000
D80	C8000	25,100	39,000
F60	F600	20,200	22,500
F61	F600	20,200	22,500
F70	F700	21,200	28,000
F71	F700	21,200	28,000
F77	F700*	24,000	24,000
F82	F800	23,100	35,000

*(4x4)

CODE	SERIES	GVWR LB.	
		STANDARD	MAXIMUM
F83	F800	23,100	35,000
G80	FT800	41,500	50,000
H80	CT8000	44,800	56,000
J65	B600	21,000	25,500
J75	B700	24,100	28,000
K84	F800	23,100	35,000
K85	F800	23,100	35,000
L90	FT900	41,500	50,000

CY2405-2G

LIGHT/MEDIUM/HEAVY (Continued)

BODY CODES
BRONCO, LIGHT TRUCK,
(F-150 — F-250 — F-350 — F-SUPER DUTY)

MFD. BY FORD MOTOR CO. IN U.S.A.

DATE: _____ GVWR: _____
 FRONT GAWR: _____ REAR GAWR: _____

WITH TIRES RIMS WITH TIRES RIMS
 AT PSI COLD AT PSI COLD

THIS VEHICLE CONFORMS TO ALL APPLICABLE FEDERAL MOTOR VEHICLE SAFETY STANDARDS IN EFFECT ON THE DATE OF MANUFACTURE SHOWN ABOVE

VEHICLE IDENTIFICATION NO. _____

TYPE — TRUCK
 1D 7A

EXTERIOR PAINT COLORS _____ DSO _____

WB	TYPE	GVW	BODY	TRANS	AXLE	TAPE	SPRING
133	F252	LG4	F	342	B	2D29	

000.00
000.00
000.00
000.00
000.00
000.00
000.00
000.00
000.00
000.00

L G 4

LIGHT TRUCK

Code	Fabric	Seat Type
B	Vinyl	Bench
D	Knit & Vinyl	Bench
L	Bodycloth	Bench
R	Cloth	Captains Chair
S	Cloth	Bench
T	Bodycloth	Flight Bench

BRONCO AND F-SERIES

Trim Color	
Code	Color
B	Regatta Blue
D	Canyon Red
G	Smoke
K	Chestnut

BRONCO

Code	Fabric	Seat Type
A	Vinyl	Bucket
L	Cloth	Bench
M	Cloth	Bucket
H	Bodycloth	Captains Chair
R	Cloth	Captains Chair

F-SERIES ONLY
CAB/BACK OF CAB

Super Cab	Crew Cab	Regular	Specifications
M	D	3 4 8	Flareside Pickup Styleside Pickup Chassis Cab

LIGHT/MEDIUM/HEAVY (Continued)

BODY CODES
E-150 — E-250 — E-350

MFD. BY FORD MOTOR CO. IN U.S.A.

DATE: _____ GVWR: LB/ KG
FRONT GAWR: LB REAR GAWR: LB

KG WITH TIRES RIMS KG WITH TIRES RIMS
AT PSI COLD AT PSI COLD

THIS VEHICLE CONFORMS TO ALL APPLICABLE FEDERAL MOTOR VEHICLE SAFETY STANDARDS IN EFFECT ON THE DATE OF MANUFACTURE SHOWN ABOVE

VEHICLE IDENTIFICATION NO. _____

TYPE TRUCK
IG 9N

EXTERIOR PAINT COLORS							DSO
WB	TYPE	GVW	BODY	TRANS	AXLE	TAPE	SPRING
138	E112		EY	T	16	2	2C2D

E Y

SEAT TRIM AND STYLE

Code	Trim	Type
A	Vinyl	Bucket
E	Vinyl	Bucket
K	Cloth	Bucket
L	Cloth	Captain Chairs

TRIM COLOR

Code	Color
B	Regatta Blue
D	Canyon Red
G	Smoke
K	Chestnut

LIGHT/MEDIUM/HEAVY (Continued)

**BODY CODES —
MEDIUM/HEAVY TRUCK — F, B AND C-SERIES**

INCOMPLETE VEHICLE MANUFACTURED BY
FORD MOTOR CO. IN U.S.A.

GVWR:
VEHICLE IDENTIFICATION NUMBER

7D 87 16
EXTERIOR PAINT COLORS

WB	TYPE	GVW	BODY	TRANS	AXLE	
129	F60		HA8	CU	63V	1988

H A 8

ON COWL/BUS (B-SERIES) UNITS
THE FIRST TWO SPACES
REMAIN BLANK

SEAT TRIM AND STYLE

All F-Series	
Code	Trim Type
B	Heidi Vinyl Bench (Base)
C	Wheaton Polyknit and Vinyl Bench (Custom)
G	Heavy Duty Heidi Vinyl Bench
H	Heavy Duty Heidi Vinyl Bucket

All C-Series	
Code	Trim Type
E	Biscay Knitted Vinyl and Vinyl Bench (Custom)
F	Heavy Duty Heidi Vinyl Bench (Base)
G	Heavy Duty Heidi Vinyl Bucket

CAB/BODY STYLE

Code	Style
6	Chassis Cab, Fire Truck
7	Chassis-Cowl
8	Chassis-Cab
F	Chassis-Cab, Fire Truck with Electric Fuel Pump
G	Chassis-Cowl with Electric Fuel Pump
H	Chassis-Cab with Electric Fuel Pump

TRIM COLOR

Code	Color
A	Black/Charcoal
G	Smoke/Charcoal
K	Chestnut
L	Chestnut/Tan
1	Black w/Red Laser Stripe

LIGHT/MEDIUM/HEAVY (Continued)

TRANSMISSION CODES
BRONCO, E-150 — E-250 — E-350,
F-150 — F-250 — F-350 — F-SUPER DUTY

MFD. BY FORD MOTOR CO. IN U.S.A.

DATE: _____ GVWR: _____
 FRONT GAWR: _____ REAR GAWR: _____

WITH _____ WITH _____
 TIRES _____ TIRES _____
 RIMS _____ RIMS _____

AT PSI COLD _____ AT PSI COLD _____

THIS VEHICLE CONFORMS TO ALL APPLICABLE FEDERAL MOTOR
 VEHICLE SAFETY STANDARDS IN EFFECT ON THE DATE OF
 MANUFACTURE SHOWN ABOVE

VEHICLE IDENTIFICATION NO. _____

TYPE — TRUCK
 7N 9M

EXTERIOR PAINT COLORS _____ DSO _____

WB	TYPE	GVW	BODY	TRANS	AXLE	TAPE	SPRING
133	F252	LG4	F	342	B	2D29	

Code	Description
BRONCO	
K	Automatic C6
T	Automatic — AOD
M	Manual — 5-Speed Overdrive (M5OD)
Z	Manual — 5-Speed H.D. Overdrive (M5OD-HD)

E-150 — E-250 — E-350	
K	Automatic — C6
T	Automatic 4-Speed AOD
M	Manual — 5-Speed Overdrive (M5OD)
Z	Manual — 5-Speed H.D. Overdrive (M5OD-HD)

F-150 — F-250 — F-350	
K	Automatic — C6
T	Automatic — AOD
M	Manual — 5-Speed Overdrive (M5OD)
Z	Manual — 5-Speed H.D. Overdrive (M5OD-HD)

LIGHT/MEDIUM/HEAVY (Continued)

**TRANSMISSION CODES
MEDIUM/HEAVY TRUCK — F-, B- AND C-SERIES**

**INCOMPLETE VEHICLE MANUFACTURED BY
FORD MOTOR CO. IN U.S.A.**

**GVWR:
VEHICLE IDENTIFICATION NUMBER**

7D 87

EXTERIOR PAINT COLORS 16 DSO

WB 129	TYPE-GVW F60	BODY 4A8	TRANS CU	AXLE 63V	1988
-----------	-----------------	-------------	-------------	-------------	------

TRANSMISSION CODES

Code	Description	Code	Description
AA	Allison AT-545 Automatic	CU	FS-6106 6-Speed
AB	Allison MT-643 Automatic	FS	RT-6610 10-Speed
AC	Allison MT-653 Automatic	FT	RT-6613 13-Speed
CH	CL-558/FS-5005 5-Speed	RR	Delete Transmission (DSO Glider)
CJ	CL-551/FS-5005 5-Speed	SD	Spicer CM-6052A 5-Speed
CL	CL-450/FS-3005/FS-4005 5-Speed	SF	Spicer CM-6052C 5-Speed
CM	CL-455/FS-3005/FS-4005 5-Speed	SK	Spicer CM-5552A 5-Speed
CR	FS-6105A 5-Speed	SL	Spicer CM-5852A 5-Speed
CS	FS-6105B 5-Speed	SN	Spicer CM-4054A 5-Speed
CT	FS-5106 6-Speed	SP	Spicer CM-4054D 5-Speed

CY2664-2E

LIGHT/MEDIUM/HEAVY (Continued)

AXLE CODES
BRONCO, F-150 — F-250 — F-350 — F-SUPER DUTY

MFD. BY FORD MOTOR CO. IN U.S.A.

DATE: _____ GVWR: _____
 FRONT GAWR: _____ REAR GAWR: _____

WITH _____ WITH _____
 TIRES _____ TIRES _____
 RIMS _____ RIMS _____

AT PSI COLD _____ AT PSI COLD _____

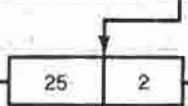
THIS VEHICLE CONFORMS TO ALL APPLICABLE FEDERAL MOTOR
 VEHICLE SAFETY STANDARDS IN EFFECT ON THE DATE OF
 MANUFACTURE SHOWN ABOVE

VEHICLE IDENTIFICATION NO. _____

TYPE-TRUCK
 7N 9M

EXTERIOR PAINT COLORS _____ DSO _____

WB	TYPE	GVW	BODY	TRANS	AXLE	TAPE	SPRING
133	F252	LG4	F	252	B	2D29	



REAR AXLE CODES

Code	Capacity (lbs.)	Ratio
12	3800	2.73
18	3800	3.08
19	3800	3.55
H5	3800	4.10
H8	3800	3.08
H9	3800	3.55
25	3800	4.10
27	5300	3.73
29	5300	3.55
B5	5300	4.10
B9	5300	3.55
35	6250	4.10
39	6250	3.55
C5	6250	4.10
C9	6250	3.55
45	7400	4.10
49	7400	3.55
D5	7400	4.10
65	8250	4.10
69	8250	3.55
F5	8250	4.10
72	11,000	4.63
73	11,000	5.13

FRONT AXLE CODES (Not Applicable On E-150 — E-250 — E-350)

Bronco and F-150 — F-250 — F-350	
Code	Description
2	Front Axle Limited Slip

LIGHT/MEDIUM/HEAVY (Continued)

AXLE CODES
E-150 — E-250 — E-350

MFD. BY FORD MOTOR CO. IN U.S.A.

DATE: _____

FRONT GAWR: LB _____ KG _____

GVWR: LB: KG _____

REAR GAWR: LB _____ KG _____

WITH TIRES RIMS | WITH TIRES RIMS

AT PSI COLD _____ AT PSI COLD _____

THIS VEHICLE CONFORMS TO ALL APPLICABLE FEDERAL MOTOR VEHICLE SAFETY STANDARDS IN EFFECT ON THE DATE OF MANUFACTURE SHOWN ABOVE

VEHICLE IDENTIFICATION NO. _____

TYPE TRUCK

10 7A

EXTERIOR PAINT COLORS _____ DSO _____

WB	TYPE	GVW	BODY	TRANS	AXLE	TAPE	SPRING
138	E112	EY	T	16	B	2C2D	

E-150 — E-250 — E-350 REGULAR REAR AXLE

Code	# Capacity	Ratio
18	3750	3.08
19	3750	3.55
23	5300	3.54
24	5300	3.73
33	6340	3.54
52	7400	4.10
53	7400	3.54

E-150 — E-250 — E-350 LIMITED SLIP REAR AXLE

Code	# Capacity	Ratio
H9	3750	3.08
B4	5300	3.73
C2	6340	4.10
C3	6340	3.54
E2	7400	4.10

CY2781-2C

LIGHT/MEDIUM/HEAVY (Continued)

AXLE CODES
MEDIUM/HEAVY TRUCK — F-, B- AND C-SERIES

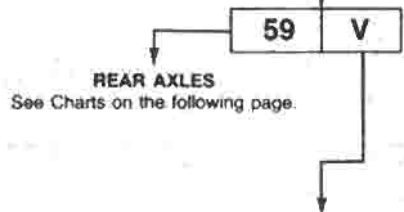
INCOMPLETE VEHICLE MANUFACTURED BY FORD MOTOR CO. IN U.S.A.

GVWR:
VEHICLE IDENTIFICATION NUMBER

7D 67

EXTERIOR PAINT COLORS

WB	TYPE-GVW	BODY	TRANS.	AXLE	16 DSO
129	F60	HA8	CU	59V	1988



CODE	AXLE	STRG.	CODE	AXLE	STRG.
4	7,000 lb. Steel	Manual	J	10,000 lb. Steel	Manual ^①
5	9,000 lb. Steel	Manual	M	7,000 lb. Steel	Power
6	10,000 lb. Steel	Manual	N	9,000 lb. Steel	Power
8	6,000 lb. Steel	Manual	O	10,000 lb. Steel	Power
9	8,000 lb. Steel	Manual	P	12,000 lb. Steel	Power
A	10,000 lb. Steel	Power ^①	S	16,000 lb. Steel	Power
E	12,000 lb. Alum.	Power	V	6,000 lb. Steel	Power
F	12,000 lb. Alum.	Manual	W	8,000 lb. Steel	Power
G	12,000 lb. Steel	Power ^①	X	12,000 lb. Steel	Manual ^①
H	12,000 lb. Steel	Manual	Z	12,000 lb. Alum.	Manual ^①
I	12,000 lb. Alum.	Power ^①			

^①With greasable drag link and tie rods

LIGHT/MEDIUM/HEAVY (Continued)

AXLE CODES REAR
MEDIUM/HEAVY TRUCKS — F-, B- AND C-SERIES

**INCOMPLETE VEHICLE MANUFACTURED BY
 FORD MOTOR CO. IN U.S.A.**

GVWR:
VEHICLE IDENTIFICATION NUMBER

7D 67

16
DSO

EXTERIOR PAINT COLORS					
WB	TYPE-GVW	BODY	TRANS	AXLE	
129	F60	HA8	CU	59 V	1988

59 V

FRONT AXLE CODE
 (Refer to front axle code charts)

SINGLE REAR AXLE CODES

CODE	DESCRIPTION	RATIO	CODE	DESCRIPTION	RATIO	CODE	DESCRIPTION	RATIO
1A	Rockwell R-170	4.11	EQ	Eaton 17121	5.57	TG	RS-15-120	7.17
2E	RS-21-145	3.91	ES	Eaton 17101	4.88	V1	RS-23-160	3.42
2F	RS-21-145	4.10	F4	RS-13-120	4.30	V2	RS-23-160	3.68
2G	RS-21-145	4.56	F5	RS-13-120	4.88	V4	RS-23-160	3.73
2H	RS-21-145	4.88	F6	RS-13-120	6.14	V5	RS-23-160	3.91
2J	RS-21-145	5.29	F7	RS-13-120	7.17	V6	RS-23-160	4.10
2K	RS-21-145	5.86	FH	Eaton 17221	6.14/8.38	V7	RS-23-160	4.30
2M	RS-21-145	6.43	FK	Eaton 22121	5.57	V8	RS-23-160	4.56
2N	RS-21-145	6.83	FQ	Eaton 17121	6.14	V9	RS-23-160	4.89
2P	RS-21-145	7.17	FS	Eaton 17101	5.29	VA	Rockwell R-170	4.88
3A	Rockwell R-170	5.29	G4	RS-15-210	4.56/6.36	VB	RS-23-160	5.38
3E	RS-21-230	3.91/5.45	G5	RS-15-210	4.88/6.80	VC	RS-23-160	5.63
3F	RS-21-230	4.10/5.72	G6	RS-15-210	5.38/7.50	VD	RS-23-160	6.14
3G	RS-21-230	4.56/6.36	G7	RS-15-210	6.14/8.57	VE	RS-23-160	6.83
3H	RS-21-230	4.88/6.80	G9	RS-15-210	6.83/9.53	VF	RS-23-160	7.17
3J	RS-21-230	5.38/7.50	GK	Eaton 22121	6.17	VH	Eaton 17201	3.70/5.05
3K	RS-21-230	6.50/9.07	GP	Eaton 23221	4.11/5.60	VJ	Eaton 17201	4.11/5.60
3M	RS-21-230	6.83/9.53	HB	Eaton 22221	5.57/7.60	VL	Eaton 17201	4.56/6.21
3N	RS-21-230	7.17/10.0	HK	Eaton 22121	6.50	VM	Eaton 17201	4.88/6.65
4A	Rockwell R-170	6.14	JB	Eaton 22221	6.17/8.41	VN	Eaton 17201	5.29/7.21
51	RS-17-140	3.91	JH	Eaton 17221	6.57/8.94	W3	RS-17-220	6.14/8.57
52	RS-17-140	4.10	JQ	Eaton 17121	6.57	W5	RS-17-220	3.91/5.45
53	RS-17-140	4.56	KB	Eaton 22221	6.50/8.86	W6	RS-17-220	4.10/5.72
54	RS-17-140	4.88	KK	Eaton 22121	5.29	W7	RS-17-220	4.56/6.36
55	RS-17-140	5.29	MB	Eaton 22221	4.88/6.65	W8	RS-17-220	4.88/6.80
56	RS-17-140	5.86	NB	Eaton 22221	5.29/7.21	W9	RS-17-220	5.38/7.50
57	RS-17-140	6.43	PK	Eaton 22121	4.11	WA	RS-17-220	6.50/9.07
58	RS-17-140	6.83	OB	Eaton 22221	4.11/5.61	WB	RS-17-220	6.83/9.53
59	RS-17-140	7.17	QP	Eaton 23221	4.56/6.21	WC	RS-17-220	7.17/10.0
5A	Rockwell R-170	6.83	RK	Eaton 22121	4.62	X1	RS-23-240	4.10/5.59
7A	Rockwell R-170	5.86	RP	Eaton 23221	4.88/6.64	X2	RS-23-240	4.30/5.86
AS	Eaton 17101	3.70	SA	Rockwell R-170	4.63	X3	RS-23-240	4.56/6.22
BS	Eaton 17101	4.11	SB	Eaton 22221	4.62/6.31	X4	RS-23-240	4.88/6.65
CP	Eaton 23221	5.43/7.39	SK	Eaton 22121	4.88	X5	RS-23-240	5.38/7.33
DP	Eaton 23221	6.17/8.40	TC	RS-15-120	4.56	X6	RS-23-240	5.57/7.60
DS	Eaton 17101	4.56	TD	RS-15-120	4.88	X7	RS-23-240	6.14/8.38
EH	Eaton 17221	5.57/7.60	TE	RS-15-120	5.13	X8	RS-23-240	6.50/8.85
EP	Eaton 23221	6.67/9.08	TF	RS-15-120	6.14	X9	RS-23-240	7.17/9.76

LIGHT/MEDIUM/HEAVY (Continued)

AXLE CODES — REAR (Cont'd.)
 MEDIUM/HEAVY TRUCKS — F-, B-, AND C-SERIES
 TANDEM REAR AXLE CODES

Code	Description	Ratio	Code	Description	Ratio
8F	Rockwell SQ-100P*	3.73	BD	Rockwell SQ-100	6.83
8J	Rockwell SQ-100P*	4.10	BE	Rockwell SQ-100	7.17
91	Rockwell SL-100	3.73	WL	Rockwell SL-100	3.90
92	Rockwell SL-100	4.10	WN	Rockwell SL-100	4.33
93	Rockwell SL-100	5.86	WQ	Rockwell SL-100	4.63
94	Rockwell SL-100	6.14	WR	Rockwell SL-100	4.88
95	Rockwell SL-100	7.17	WS	Rockwell SL-100	5.29
B2	Rockwell SQ-100	3.55	WV	Rockwell SL-100	6.83
B3	Rockwell SQ-100	3.73	YB	Rockwell SQ-100P	6.14
B4	Rockwell SQ-100	3.90	YM	Rockwell SQ-100P	4.63
B5	Rockwell SQ-100	4.10	YN	Rockwell SQ-100P	5.86
B6	Rockwell SQ-100	4.33	YQ	Rockwell SQ-100P	3.73
B8	Rockwell SQ-100	4.63	YS	Rockwell SQ-100P	4.33
B9	Rockwell SQ-100	4.88	YT	Rockwell SQ-100P	4.88
BA	Rockwell SQ-100	5.29	YU	Rockwell SQ-100P	3.90
BB	Rockwell SQ-100	5.86	YV	Rockwell SQ-100P	4.10
BC	Rockwell SQ-100	6.14	YW	Rockwell SQ-100P	5.29

*Aluminum Carrier Housing.

CY3102-2B

LIGHT/MEDIUM/HEAVY (Continued)

EXTERNAL BODY TAPE STRIPE CODES
BRONCO, E-150 — E-250 — E-350, F-150 — F-250 —
F-350 — F-SUPER DUTY

MFD, BY FORD MOTOR CO. IN U.S.A.

DATE:	GVWR:		
FRONT GAWR:	REAR GAWR:		
	WITH		WITH
	TIRES		TIRES
	RIMS		RIMS
AT PSI COLD	AT PSI COLD		

THIS VEHICLE CONFORMS TO ALL APPLICABLE FEDERAL MOTOR VEHICLE SAFETY STANDARDS IN EFFECT ON THE DATE OF MANUFACTURE SHOWN ABOVE

VEHICLE IDENTIFICATION NO. _____

TYPE-TRUCK
 7N SM

EXTERIOR PAINT COLORS

WB	TYPE	GVW	BODY	TRANS	AXLE	TAPE	DSO
133		F252	LG4	F	342	B	2D29

BRONCO EXTERNAL BODY TAPE STRIPE CODES

Code	Tape Stripe
1	Light Blue/Bright Blue
2	Medium Tan/Dark Tan
3	Medium Charcoal/Red Orange
U	Light Desert Tan — Paint Stripe with Medium Tan/Dark Tan — Tape Break Stripe

ECONOLINE — TAPE STRIPES

Code	Tape Stripe
1	Bright Coral/Red Orange
2	Medium Light Blue/Bright Blue
3	Bright Mandarin/Orange
4	Medium Light Desert Tan/Desert Tan

F-150 — F-350 EXTERNAL BODY TAPE STRIPE CODES
XL SRW STYLESIDE SOLID PAINT (PAINT STRIPE)
LESS CHAMFER STRIPES

Code	Tape Stripe
1	Red Orange
2	Grabber Blue
3	Copper
4	Light Desert Tan
5	Light Charcoal

F-150 — F-350 ALL TUTONES (TAPE)
REGULAR AND VICTORIA TUTONES (TAPE)

Code	Tape Stripe
1	Light Blue/Bright Regatta Blue
2	Light Chestnut/Light Desert Tan
3	Medium Charcoal/Red Orange

LIGHT/MEDIUM/HEAVY (Continued)

SUSPENSION — SPRING IDENTIFICATION CODES
BRONCO, F-150 — F-250 — F-350 — F-SUPER DUTY

MFD. BY FORD MOTOR CO. IN U.S.A.

DATE: _____ GVWR: _____
FRONT GAWR: _____ REAR GAWR: _____

WITH TIRES RIMS | WITH TIRES RIMS

AT PSI COLD | AT PSI COLD

THIS VEHICLE CONFORMS TO ALL APPLICABLE FEDERAL MOTOR VEHICLE SAFETY STANDARDS IN EFFECT ON THE DATE OF MANUFACTURE SHOWN ABOVE

VEHICLE IDENTIFICATION NO. _____

TYPE TRUCK
7N 9M

EXTERIOR PAINT COLORS _____ DSO _____

WB	TYPE	GVW	BODY	TRANS	AXLE	TAPE	SPRING
133	F252	LG4	F	342	B	2029	

Aux./Opt. Usage Code (Front) — 2 D 2 9
Front Spring Code
Aux./Opt. Usage Code (Rear)
Rear Spring Code

BRONCO SPRING IDENTIFICATION CODES

Aux./Opt. Usage Code (Front) — Not Applicable

Aux./Opt. Usage Code (Rear) — Not Applicable

FRONT SPRING CODES — BRONCO

Code	Part Number
B	E0TA-5310-BC
C	E0TA-5310-CC
G	E0TA-5310-GC
U	E0TA-5310-UC
V	E0TA-5310-VB

REAR SPRING CODES — BRONCO

Code	Part Number
Z	E3TA-5560-ANA

F-150 — F-250 — F-350 — F-SUPER DUTY
AUX./OPT. FRONT SPRING USAGE CODE

Code	Description
3	Maximum Front GAWR Package
4	Heavy Duty Front Suspension Package

F-150 — F-250 — F-350 — F-SUPER DUTY
FRONT SPRING CODES

Code	Part Number
A	E0TA-5310-AC
B	E0TA-5310-BC
C	E0TA-5310-CC
D	E0TA-5310-DC
E	E0TA-5310-EC
F	E0TA-5310-FC
G	E0TA-5310-GC
H	E3TA-5310-XA
J	E3TA-5310-YA
K	E3TA-5310-ZA
M	E3TA-5310-AAA
N	E5TS-5310-BA
R	E5TA-5310-RA
S	E5TA-5310-SA
T	E5TA-5310-TA
U	E0TA-5310-UC
V	E0TA-5310-VB
1	E8TA-5310-AA
5	E0TA-5310-AAB
6	E0TA-5310-ABB
7	E0TA-5310-ACB
8	E5TA-5310-NA
9	E3TA-5310-ABA

F-150 — F-250 — F-350 — F-SUPER DUTY
AUX./OPT. REAR SPRING USAGE CODE

Code	Description
3	Heavy Duty Rear Suspension Package
—	Auxiliary Rear Springs
4	400# — F-150
7	710# — F-250 — F-350
9	900# — F-350

F-150 — F-250 — F-350 — F-SUPER DUTY
REAR SPRING CODE

Code	Part Number
A	E4TA-5560-SA
D	E6TA-5560-NA
F	E7TA-5560-FA
H	E6TA-5560-LA
L	E3TA-5560-KA
V	E6TA-5560-RA
W	E4TA-5560-TA
Y	E7TA-5560-YA
6	E4TA-5560-EA
7	E7TA-5560-KA
8	E8TA-5A975-AA
9	E4TA-5560-HA

LIGHT/MEDIUM/HEAVY (Continued)

SUSPENSION-SPRING IDENTIFICATION CODES
E-150 — E-250 — E-350

MFD. BY FORD MOTOR CO. IN U.S.A.

DATE: _____ GVWR: LB/ KG
 FRONT GAWR: LB REAR GAWR: LB
 KG KG

WITH TIRES | WITH TIRES
 RIMS | RIMS

AT PSI COLD | AT PSI COLD

THIS VEHICLE CONFORMS TO ALL APPLICABLE FEDERAL MOTOR
 VEHICLE SAFETY STANDARDS IN EFFECT ON THE DATE OF
 MANUFACTURE SHOWN ABOVE

VEHICLE IDENTIFICATION NO. _____

TYPE TRUCK
 10 7A

EXTERIOR PAINT COLORS _____ DSO _____

WB	TYPE	GVW	BODY	TRANS	AXLE	TAPE	SPRING
138	E112	EY	T	16	B	2C2D	

Aux./Opt. Usage Code (Front)	2	C	2	D
Front Spring Code				
Aux./Opt. Usage Code (Rear)				
Rear Spring Code				

E-150 — E-250 — E-350
AUX./OPT. FRONT SPRING USAGE CODE

Code	Description
2	Heavy Duty Front Springs
4	Front Spring 3,850/4,200 # GAWR Rating

E-150 — E-250 — E-350
FRONT SPRING CODES

Code	Part Number
A	D5UA-5310-BA
B	D5UA-5310-CA
C	D5UA-5310-DA
D	D5UA-5310-EA
E	D5UA-5310-FA
F	D5UA-5310-HB
G	D5UA-5310-JB
H	D5UA-5310-KA
J	D5UA-5310-LB
K	D5UA-5310-MA
L	D5UA-5310-RA
M	D5UA-5310-SA
N	D5UA-5310-UA
O	D5UA-5310-VA
P	D5UA-5310-ALB
R	D5UA-5310-AMB
S	D5UA-5310-ARB
T	D5UA-5310-AUB
V	D7UA-5310-AHA
W	D7UA-5310-AJA
Y	D8TA-5310-HA

E-150 — E-250 — E-350
AUX./OPT. REAR SPRING USAGE CODES

Code	Description
2	Heavy Duty Rear Springs
4	Handling Package

E-150 — E-250 — E-350
REAR SPRING CODES

Code	Part Number
A	D9TA-5560-ZA
C	E1TA-5560-ACA
D	E1TA-5560-ADA
E	E1TA-5560-AEA
F	E1TA-5560-ALA
H	E1TA-5560-AFA
J	D9TA-5560-LA
K	D9TA-5560-HA
L	E2TA-5560-ARA
M	E1TA-5560-AGA
N	E1TA-5560-AHA
P	D9TA-5560-AYA
Q	E0TA-5560-BVA
T	D9TA-5560-KA
U	D9TA-5560-MA
W	E4UA-5560-RA
Y	D9TA-5560-AVA
Z	D9TA-5560-JA

LIGHT/MEDIUM/HEAVY (Continued)

DISTRICT SALES OFFICE (DSO) AND
WHEELBASE (WB) CODES
BRONCO, E-150 — E-250 — E-350,
F-150 — F-250 — F-350 — F-SUPER DUTY

MFD. BY FORD MOTOR CO. IN U.S.A.

DATE: _____ GVWR: _____
FRONT GAWR: _____ REAR GAWR: _____

WITH TIRES RIMS WITH TIRES RIMS

AT PSI COLD _____ AT PSI COLD _____

THIS VEHICLE CONFORMS TO ALL APPLICABLE FEDERAL MOTOR VEHICLE SAFETY STANDARDS IN EFFECT ON THE DATE OF MANUFACTURE SHOWN ABOVE

VEHICLE IDENTIFICATION NO. _____

TYPE-TRUCK
7N 9M 21

EXTERIOR PAINT COLORS

WB	TYPE	GVW	BODY	TRANS	AXLE	TAPE	SPRING	DSO
133		F252	LG4	F	342	B	2D29	

DSO — FSO — PTO (DOMESTIC, FOREIGN AND SPECIAL ORDER)

The D.S.O. space will show a two-digit code number of the district which ordered the unit (see chart below). This code will appear on all units — domestic or export. If unit is built on a D.S.O., F.S.O., P.T.O. (special orders), the complete order number is under the D.S.O. spacer after the district code number.

Wheelbase (Inches)
Bronco
105

F-150 — F-250 — F-350	F-Super Duty
117	137
133 155	161
137 161	
139 168	

E-150 — E-250 — E-350 (Econoline and Club Wagon)
124
138
158
176

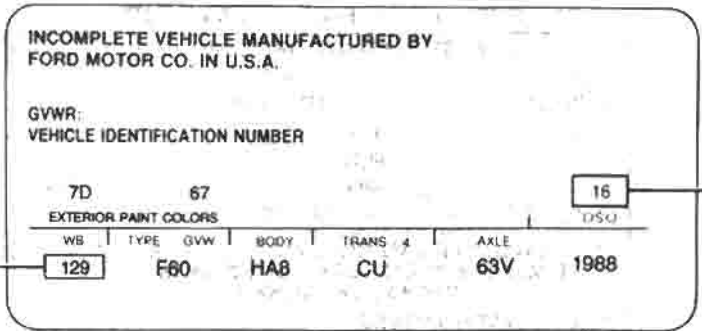
Code	District
11	Boston
12	Buffalo
13	New York
14	Pittsburgh
16	Philadelphia
17	Washington
21	Atlanta
22	Charlotte
23	Memphis
24	Jacksonville
26	New Orleans
28	Louisville
41	Chicago
42	Cleveland
43	Milwaukee
46	Indianapolis
47	Cincinnati
48	Detroit

Code	District
52	Dallas
53	Kansas City
54	Omaha
55	St. Louis
57	Houston
58	Twin Cities
71	Los Angeles
72	San Jose
74	Seattle
75	Phoenix
76	Denver
83	Government
84	Home Office Reserve
85	American Red Cross
86	Recreation Vehicles
87	Body Company
89	Transportation Services
90's	Export
00	Special

Ford of Canada	
Mercury Regions	Ford Regions
A1 Central	B1 Central
A2 Eastern	B2 Eastern
A3 Atlantic	B3 Atlantic
A4 Midwestern	B4 Midwestern
A6 Western	B6 Western
A7 Pacific	B7 Pacific
A8 Great Lakes	B8 Great Lakes
11 Export	11 Export

LIGHT/MEDIUM/HEAVY (Continued)

DISTRICT SALES OFFICE (DSO) AND
WHEELBASE (WB) CODES
MEDIUM HEAVY TRUCK — F, B AND C-SERIES



Wheelbase	(Inches)	
F600-800	129	142
F-8000	141	154
	153	178
	171	190
	177	196
	189	214
	207	238
	225	
	237	
FT-800-900	154	
	178	
	190	
	196	
	214	
	238	
B600	151	
	193	
	217	
	237	
B700	237	
	255	
	275	
C8000	111	
	135	
	153	
	175	
CT-8000	135	
	153	
	161	

DSO — FSO — PTO (DOMESTIC, FOREIGN AND SPECIAL ORDER)

The D.S.O. space will show a two-digit code number of the district which ordered the unit (see chart below). This code will appear on all units — domestic or export. If unit is built on a D.S.O. E.S.O. P.T.O. (special orders), the complete order number is under the D.S.O. space **after** the district code.

Code	District
11	Boston
12	Buffalo
13	New York
14	Pittsburgh
16	Philadelphia
17	Washington
21	Atlanta
22	Charlotte
23	Memphis
24	Jacksonville
26	New Orleans
28	Louisville
41	Chicago
42	Cleveland
43	Milwaukee
46	Indianapolis
47	Cincinnati
48	Detroit

Code	District
52	Dallas
53	Kansas City
54	Omaha
55	St. Louis
57	Houston
58	Twin Cities
71	Los Angeles
72	San Jose
74	Seattle
75	Phoenix
76	Denver
83	Government
84	Home Office Reserve
85	American Red Cross
86	Recreation Vehicles
87	Body Company
89	Transportation Services
90's	Export
00	Special

Ford of Canada	
Mercury Regions	Ford Regions
A1 Central	B1 Central
A2 Eastern	B2 Eastern
A3 Atlantic	B3 Atlantic
A4 Midwestern	B4 Midwestern
A6 Western	B6 Western
A7 Pacific	B7 Pacific
A8 Great Lakes	B8 Great Lakes
I2 Export	I1 Export